



## REVISE YOUR G-CODE:

Edit, Compare, Backplot, and simple DNC

### 4 EDITIONS:

- CNC Editor Light - FREE Edition
- CNC Editor Express
- CNC Editor
- CNC Editor Enterprise

### NETWORK COMPATIBILITY:

- Windows 7
- Windows 8
- Windows 10
- Windows 2008 Server
- Windows 2012 Server

### WHY USE CNC EDITOR?

- CNC intelligent editing
- Undo and Redo
- File Compare
- Send, Receive and Drip-feed
- 3D Backplotting and verification

## TIRED OF MANUALLY EDITING G-CODE ON YOUR CNC?

Need to see how edits affect your part? Predator CNC Editor is the most popular CNC code editor available on the market. It includes hundreds of features to improve day to day productivity of CNC machine tools, yet is extremely easy to use. Predator CNC Editor, available in four editions, is the ideal choice for any shop, from the small job shop to the largest manufacturer.

## CNC INTELLIGENT EDITING WITH UNDO & REDO:

Dozens of CNC intelligent editing commands make changes to your CNC program quickly and easily. Edit confidently with the ability to undo and redo all changes. Microsoft® Word compatible menus, toolbar, and shortcut keys make Predator CNC Editor easy to learn.

## UNLIMITED FILE SIZE:

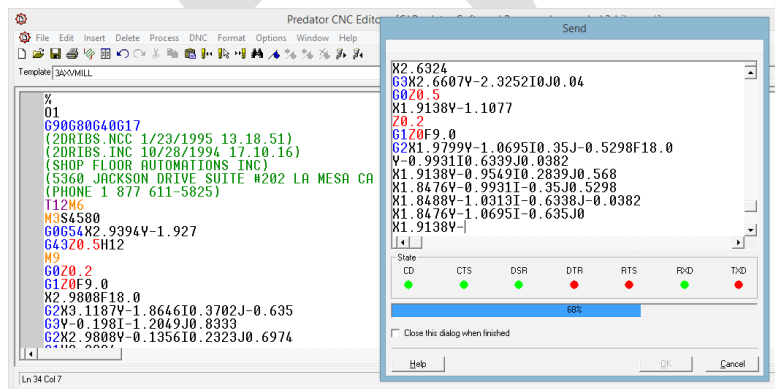
Predator CNC Editor supports up to 64MB of code per CNC program. In addition, editing multiple CNC programs at the same time is supported, with the ability to cut, copy, and paste between them.

## FILE COMPARE:

The Predator CNC Editor includes a side-by-side file compare which identifies each G and M code difference and fixes them with a single click of the mouse. A summary report and numerous options to ignore spaces, blank lines, leader/trailer, feed rates, spindle speeds, and tool changes simplify the process of integrating shop floor edits with a master CNC program.

## SEND, RECEIVE, & DRIP-FEED TO YOUR CNC MACHINES:

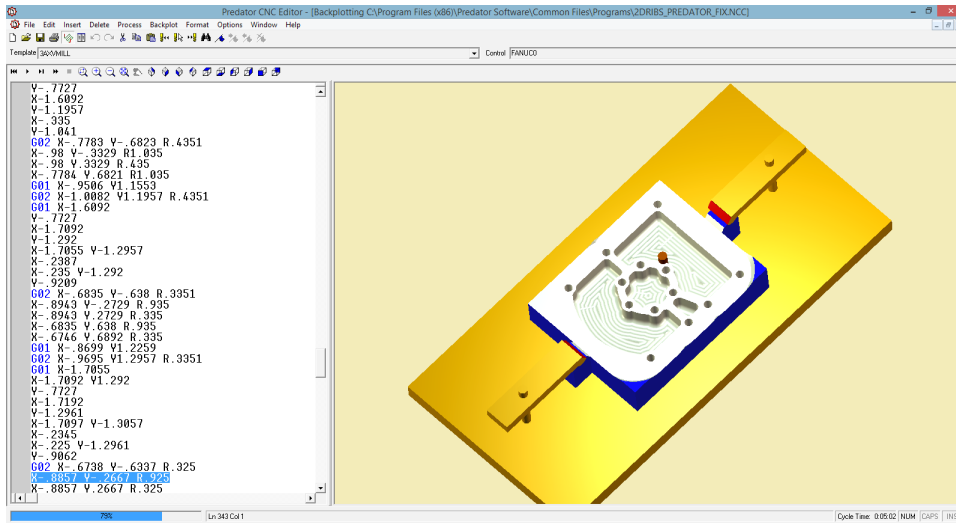
Send, receive, and drip-feed to one machine at a time, via a switch box or direct connection to any compatible CNC machine. Works in the background, even while other software applications are running. Should a tool break, an easy-to-use DNC Restart command automatically re-creates the program from any point.



### 3D BACKPLOTTING & VERIFICATION OF YOUR CNC CODE:

Graphically verify CNC code by quickly backplotting a wire frame model of any CNC program in a true 3D environment. Supports 2, 3 & 4 axis mills, routers, waterjets, lasers, and lathes. Within the graphics window, eight predefined views, zoom in, zoom out, pan, and fit commands provide complete control of the process. Copy the backplot or 3D animation to the clipboard and quickly add graphics to your setup sheets.

Within Predator CNC Editor, numerous examples are provided. For best results, 3D backplotting and verification often requires appropriate machine and reverse post-processor configuration which can be done by knowledgeable end users, Predator Resellers or Predator Software Inc.



**NOTE:** Backplotting and verification of subprogram calls, loops, complex macros, complex (4 & 5 axis) mills, and mill/turn lathes all require Predator Virtual CNC. An upgrade to our full Predator Virtual CNC product provides support for advanced subprograms, Macros, 4 & 5 axis CNC verification, and full machine simulation.

### CNC TEMPLATES:

Predator Editor CNC Templates add intelligence by remembering all the CNC control details entered into CNC Editor and Virtual CNC. Includes a library of 20 sample CNC templates. Each CNC template is completely configurable.

### GOT A CAD/CAMS SYSTEM?

Contact us for special pricing if you have Gibbs, SmartCAM, SurfCAM, BobCAD-CAM, or CAMworks. We can integrate with these systems for editing.

### ABOUT SFA & PREDATOR:

Founded in 1998, SFA started distributing the Predator Software product line in San Diego, CA. Within 6 months, the company expanded to cover the entire West Coast and soon became the #1 reseller of the year ever since 1999.

Shop Floor Automations, Inc.  
5360 Jackson Drive, Suite 202  
La Mesa, CA 91942-6003

**Phone:** (619) 461-4000  
**Toll Free:** (877) 611-5825  
**Fax:** (619) 461-5918

**Web:** [www.ShopFloorAutomations.com](http://www.ShopFloorAutomations.com)  
**Email:** [sales@ShopFloorAutomations.com](mailto:sales@ShopFloorAutomations.com)

### CNC COMPATIBILITY:

- Allen Bradley
- Anilam
- Bridgeport
- Bosch
- Bostomatic
- Centurion
- Centroid
- Cincinnati Milicron
- Deckel
- Dynapath
- Fadal
- Fagor
- FANUC
- Fidia
- General Electric
- Giddings & Lewis
- Haas
- Heidenhain
- Hurco
- Kerney & Trecker
- Maho
- Mazak
- Mitsubishi
- Mori Seiki
- Moog
- NUM
- Okuma
- Prototrak
- Roland
- Sharnoa
- Siemens
- Hitachi Seiki
- Toshiba
- Vickers
- Yasnac

